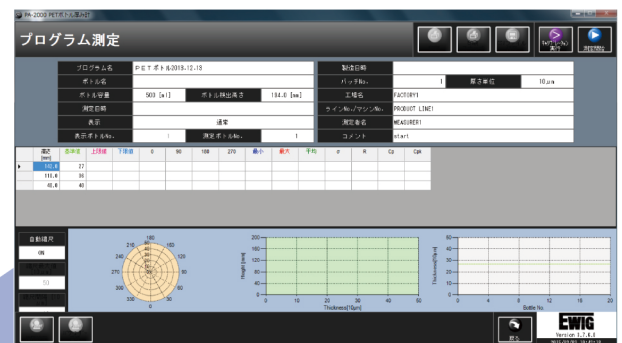


The image shows the EWIG PA-2000 SA universal testing machine, a large industrial device with a white upper section and a black lower section. The machine is equipped with a laptop that displays the control software. The software interface includes a title bar "プログラム測定設定" (Program Measurement Setting) and various data fields for parameters like "測定速度" (Measurement Speed), "測定時間" (Measurement Time), and "測定位置" (Measurement Position). A circular gauge is also visible on the right side of the screen. The machine's base has several control buttons and a power switch.



Characteristics

1. Resolution: 10μm
2. Target Bottle Height 80mm~320mm
3. Inner Diameter 35mm max
4. Bottle Material PE, PEN, PVC, PET, PP, PS, PC, etc.

Specifications

1. Measuring Range	0.1mm -1.5mm
2. Accuracy	≤30μm
3. Resolution	10μm
4. Measuring Point	Vertical point: 20 points max (1mm unit) Horizontal point: 12 points max (1 degree unit)
5. Target Bottle	Height 80mm - 320mm Body diameter 30mm -145mm
6. Measuring Time	60 sec (100 points)
7. Measuring Spot	2.5mm - 4mm
8. Data Representation	mm (second decimal places), μm, 10μm
9. Continuous Measuring number	100 pieces
10. Number of Measuring programs	999 programs
11. Data output	CSV form
12. Data total up	min, max, average, standard deviation(σ), R, Cp, Cpk
13. Interface	RS-232C
14. Operating Software	Microsoft Windows 7
15. Size	W560×H1150×D460 mm
16. Line Voltage	Selectable 100/120/220/240V
17. Weight	70kg max

Sale・Project・Maintenance



EWIG Co., Ltd.

150-0013 RABANKA III 3F

3-3-3 Ebisu, Shibuya-ku, Tokyo, Japan.

TEL: +81-3-3446-3395 FAX: +81-3-3446-3396

E-mail: sales@ewig.jp URL: <http://www.ewig.jp/>

Distributor